

**MORGAN & MORGAN<sup>®</sup>**

THE MORGAN CONNECTION

**EVERYTHING**  

---

**YOU NEED**  

---

**TO KNOW**  

---

# Put Morgan & Morgan To Work *For You*

35+ Years

IN PRACTICE

---

50+

PRACTICE AREAS

---

900+

ATTORNEYS

---

\$15B

RECOVERED

---

100+

OFFICES FROM  
COAST TO COAST

---

300,000+

PEOPLE HELPED

---

When you're approached with a case that's not the right fit, it's advantageous to the client – and to you – to have a firm in your corner you can trust. At Morgan & Morgan, we know clients often present cases that are either outside of your jurisdiction or practice area, or too big or too small for your firm to handle on your own. Or, they're simply not your specialty. Some cases are also extremely complex, requiring highly experienced attorneys and staff.

In these situations, Morgan & Morgan is ready to fill the gap, with over 50 practice areas and more than 900 attorneys. We provide your clients with dedicated legal representation, and the law firms we work with receive a referral or co-counsel fee when we successfully resolve a case\*.

The following pages are a handy guide to our case types, including our nationwide practice areas and also which case types we currently accept in each state.

**We look forward to partnering with you and ensuring your clients get the best results as quickly as possible.**

### DAN MORGAN

Managing Partner, Morgan & Morgan  
The Morgan Connection, Founder



### HAVE QUESTIONS?

Please reach out to your account executive,  
or email [info@themorganconnection.com](mailto:info@themorganconnection.com)

\*in compliance with local ethics rules



# Morgan & Morgan's Nationwide Practice Areas



Birth Injury

Business Trial Group

Catastrophic Personal Injury

Class Action

Employment Discrimination

Exploding Airbags

Fire Injury

Maritime / Admiralty

Mass Arbitration

Mass Tort

Mesothelioma

Product Liability

Social Security Disability

Toxics & Environmental

Wage & Hour

Whistleblower / Qui Tam

# Practice Areas by State

---

## ALABAMA

Personal Injury  
Premises Liability  
Trucking

## ARIZONA

Personal Injury  
Premises Liability  
Trucking

## ARKANSAS

Personal Injury  
Premises Liability  
Trucking

## CALIFORNIA

Personal Injury  
Premises Liability  
Trucking

## FLORIDA

Personal Injury  
Premises Liability  
Trucking  
Workers' Compensation  
Medical Malpractice  
Nursing Home & Elder Abuse

## GEORGIA

Personal Injury  
Premises Liability  
Trucking  
Workers' Compensation  
Medical Malpractice  
Nursing Home & Elder Abuse  
Insurance Claims & Disputes

## INDIANA

Personal Injury  
Premises Liability  
Trucking

## ILLINOIS

Personal Injury  
Premises Liability  
Trucking

## KENTUCKY

Personal Injury  
Premises Liability  
Trucking  
Workers' Compensation  
Nursing Home & Elder Abuse

## MARYLAND

Personal Injury  
Premises Liability  
Trucking

## MASSACHUSETTS

Personal Injury  
Premises Liability

## MISSOURI

Personal Injury  
Premises Liability  
Trucking  
Workers' Compensation

## MISSISSIPPI

Personal Injury  
Premises Liability  
Trucking  
Workers' Compensation

## NEW HAMPSHIRE

Personal Injury  
Premises Liability  
Trucking

## NEVADA

Personal Injury  
Premises Liability  
Trucking

## NEW JERSEY

Personal Injury  
Premises Liability  
Trucking

## NEW YORK

Personal Injury  
Premises Liability  
NY Labor Law/Construction Accidents  
Trucking

## PENNSYLVANIA

Personal Injury  
Premises Liability  
Trucking  
Construction Accidents

## SOUTH CAROLINA

Personal Injury  
Premises Liability  
Trucking  
Workers' Compensation  
Insurance Claims & Disputes  
Medical Malpractice  
Nursing Home & Elder Abuse

## TENNESSEE

Personal Injury  
Premises Liability  
Trucking  
Workers' Compensation  
Insurance Claims & Disputes  
Social Security Disability

## VIRGINIA

Personal Injury  
Premises Liability  
Trucking

## WEST VIRGINIA

Personal Injury  
Premises Liability  
Trucking

## WASHINGTON, DC

Personal Injury  
Premises Liability  
Trucking

# Mass Tort

When it comes to Mass Torts, we're experienced at handling and streamlining the complexities and substantial administrative details that are the hallmark of extensive, complicated multi-district actions. These cases can include some of the largest corporations in the country as defendants, multiple groups of lawyers, several jurisdictions, and billions of dollars. Following our Everywhere for Everyone mantra, our Mass Tort team is prepared and ready to take on referrals from anywhere in the country in the cases we are pursuing.



**MIKE MORGAN**  
Attorney

## CASES WE HANDLE

### Abbott Baby Formula

Sepsis

Meningitis

Bowel Amputations

Bacterial Infection

Loose / Bloody Stool

Bleeding

Shortness of Breath / Fatigue

Death

Salmonella

### AFFF

Bladder Cancer

Breast Cancer

Kidney Cancer

Liver Cancer

Pancreatic Cancer

Prostate Cancer

Testicular Cancer

### Baby Formula

NEC

### Camp LeJeune

Aplastic Anemia

Birth defects

Bladder Cancer

Brain Cancer

Breast Cancer

Cardiac Defect

Cervical Cancer

Colorectal/Colon Cancer

Dental issues

End-Stage Renal Disease

Epilepsy

Esophageal Cancer

Female Infertility

Fetal Death (conceived/in utero on base)

Hepatic Steatosis (Fatty Liver Disease)

Hodgkin's Disease

Intestinal Cancer

Kidney Cancer

Kidney Disease

Leukemia

Liver Cancer

Lung Cancer

Miscarriage

Multiple Myeloma

Myelodysplastic Syndromes

Neurobehavioral Effects

Non-Hodgkin's Lymphoma

Pancreatic Cancer

Parkinson's Disease

Prostate cancer

Renal Toxicity

Scleroderma

## Exactech Joint Replacement

Revision Surgery Completed

Revision Surgery Scheduled

Recommended Revision Surgery

## Elmiron

Pigmentation maculopathy

Pigmentation Macular Degeneration

Pigmentation Maculitis

Retinal Maculopathy

Retinal Pigmentary Endothelium

Dry Macular Degeneration

Blurred vision

Central vision loss

Poor light to dark adaptation

Dark Spots

Straight lines appear curved

Less vivid colors

Difficulty reading

## Eye Drops

Death

Blindness

Eye Infection

Brands:

EzriCare Artificial Tears

Clear Eyes Once Daily Eye Allergy Itch Relief

Brimonidine Tartrate Ophthalmic Solution, 0.15% Delsam Pharma Artificial Eye Ointment

Delsam Pharma's Artificial Tears

## Gardasil

Acute Disseminated Encephalomyelitis

Arthritis

Autoimmune disorders

Cervical cancer

Chronic Fatigue Syndrome

Chronic Inflammatory Demyelinating Polyneuropathy (CIDP)

Chronic Pain Syndrome

Coma

Death

Dysautonomia

Epilepsy

Fibromyalgia

Guillain-Barré Syndrome

Heart problems, including severe arrhythmia and heart attacks

Inflammatory disorders

Interconnective Tissue Disorder

Lupus

# Mass Tort (Continued)

## CASES WE HANDLE

Movement Disorders

Multiple Sclerosis

Neurological Disorders

Paralysis

Postural Orthostatic Tachycardia Syndrome (POTS)

Pulmonary Embolism

Reproductive Disorders, including premature ovarian failure

Rheumatological Disorders

Small Fiber Neuropathy

Stroke

### Hair Relaxers

Ovarian Cancer

Uterine Cancer/Endometrial Cancer

### Paraquat

Parkinson's Disease

### Philips CPAP

Lung cancer

Asthma

Chronic Respiratory Illness

Kidney Disease/Cancer

Liver Disease/Cancer

Esophageal Cancer

Oral Cancer

Nasal Cancer

Chronic Bronchitis

Pleural Effusion

Pneumoconiosis

Pulmonary Disease

Death

### Social Media Harm

Anorexia

Bulimia

Binge-Eating Disorder

Purging (Vomiting, Laxatives, Diuretics, Excessive Exercising)

Body Dysmorphia

Self Harm or Attempt

Attempted Suicide

Suicide/Death

Other Eating Disorder

### Talcum Powder

Ovarian Cancer

### Tepezza

Permanent hearing loss

Temporary hearing loss

Partial hearing loss

Full hearing loss

### Valsartan

Bladder Cancer

Liver Cancer

Pancreatic Cancer

Esophageal Cancer

Colon Cancer

Colorectal Cancer

Rectal Cancer

Stomach Cancer

Prostate Cancer



# Catastrophic Personal Injury

Insurance companies have an arsenal of common tactics they use to stall, limit, or eliminate the payouts victims deserve. They don't back down for even the most catastrophic events: traumatic brain or spine injuries, amputations, or death. These cases often end up in litigation and need a skilled trial attorney to spearhead them. Our catastrophic lawyers have seen every trick in the book and are ready to fight for the dignity and full compensation every client needs.



**MATT MORGAN**  
Attorney

## CASES WE HANDLE

Amputation/Loss of Limb

Blindness

Brain & Head Trauma,  
Concussion/Brief LOC

Broken Bones, Major Body Part

Coma

Complex Regional Pain Syndrome

Spinal Cord

Third Degree Burns

Major Organ Damage

Commercial Vehicle Accidents

Trucking Accidents

Uber/ Lyft / Rideshare Accidents

# Birth Injury

When a doctor's negligence causes a newborn to suffer a birth injury, the victim's life is affected profoundly and for years to come. Medical procedures, special schooling and services, and a variety of other needs can create a financial and emotional strain. With decades of experience, our lawyers see families through the difficulty of fighting for compensation to cover the bills and emotional toll.



**JACK COOK**  
Attorney

## CASES WE HANDLE

Brachial Plexus Palsy,  
including Erb's Palsy and  
Klumpke's Palsy

---

Brain Damage

---

Cerebral Palsy

---

Fetal Demise

---

Hemorrhaging

---

Hip Dysplasia

---

Hypoxic Ischemic  
Encephalopathy (HIE)

---

Neonatal Demise

---

Paralysis

---

Spinal Cord Damage

---

Stillbirth

---

# Employment Law

Our Employee Rights Group advocates for clients in cases involving a basket of federal, state, and local employment laws. These include the Fair Labor Standards Act, Civil Rights Act of 1964, and Age Discrimination in Employment Act. We've recovered millions for our clients, providing relief for those in the face of difficult circumstances.



**RYAN MORGAN**  
Attorney

## CASES WE HANDLE

Unpaid Wages and Overtime

Wage and Hour Class Actions

Discrimination and Wrongful Termination

Background Checks

Illegal Tip Pools

Misclassifying Workers as Independent Contractors or Exempt

Breach of Employment Agreement

COBRA

Equal Pay Act

FMLA

Retaliation

USERRA

Whistleblower Retaliation

Workplace Harassment

## DISCRIMINATION

Age

Gender

National Origin

Race

Religion

Sexual Orientation

# Mass Arbitration

Our attorneys bring cases on behalf of aggrieved consumers and workers who were forced to arbitrate their claims in lieu of going to court. But, by initiating claims simultaneously, we are able to bring their cases to mediation and substantial settlements. These cases frequently include hundreds of parties, large groups of lawyers, multiple jurisdictions and hundreds of millions of dollars. Nothing Morgan & Morgan's lawyers can't handle.



**SETH OTTENSOSER**  
Attorney

## CASES WE HANDLE

### DELIVERY DRIVER MISCLASSIFICATION

GoPuff

---

Spark

---

Skipcart

---

Point Pickup

---

Roadie

---

### INJURY

Straightening Aligners

---

### DATA BREACH

First American

---

Consumer Protection

---

College Income Sharing Agreements

---

# Product Liability

People buy products with the expectation that they're safe and work as advertised. However, products don't always do what they're supposed to do, and can even lead to injury or death. In many scenarios, product liability claims hide within other case types, making them difficult to identify. Our product liability lawyers have handled thousands of cases that have led to injury including manufacturing defects, design defects, or improper warning labels.



**MIKE MORGAN**  
Attorney

## CASES WE HANDLE

Defective Vehicles, including airbag non-deployment and tire failure

Exploding E-Cigs / Vapes

Exploding Airbags

Defective Workplace Machines and Appliances, such as conveyor belts

ATVs and Quads

Power Tools such as drills, saws, hammers, grinders, and tire jacks

Ladders and Scaffolding

Heavy Construction Machines such as cranes and forklifts

Blenders, Pressure Cookers, Ovens, and other kitchen equipment

Exploding Cell Phone Batteries

Defective Baby Products, including car seats and children's toys

# Social Security

For people who become disabled and can no longer work, Social Security Disability Insurance benefits can be an important source of income. However, most people who apply for SSDI are denied. Our specialized Social Security attorneys tap into their years and years of experience to recover max funds for claimants in the application and appeals processes. And, we have a proven track record. Morgan & Morgan wins more than the national average in recovering Social Security benefits for clients who were denied.



**BART ZADEL**  
Attorney

## CASES WE HANDLE

Disability Insurance Benefits

Supplemental Security Income Benefits

Disabled Widow or Widower

Disabled Adult Child Benefits

# Whistleblower

Each year, billions of taxpayer dollars are lost to fraud. Thanks to the False Claims Act, private citizens can file against entities defrauding the government – and receive a portion of the funds recovered. Our whistleblower team fights to hold bad players accountable and reward citizens for their bravery. That is why, when you refer a qui tam case to us, you'll communicate directly with an attorney, review pertinent info, and receive regular updates along the way. We'll accept cases at any stage, even if that means jumping in right before trial.



**JAMES YOUNG,**  
Attorney

## CASES WE HANDLE

Defense Contractor Fraud

Government Fraud

Healthcare Fraud

IRS Tax Fraud

Medicare Fraud at Hospitals

Nursing Home & Hospice Fraud

Pharmaceutical & FDA Fraud

Securities & Investments Fraud

Small Business Association Fraud

Tariff/Duty Fraud

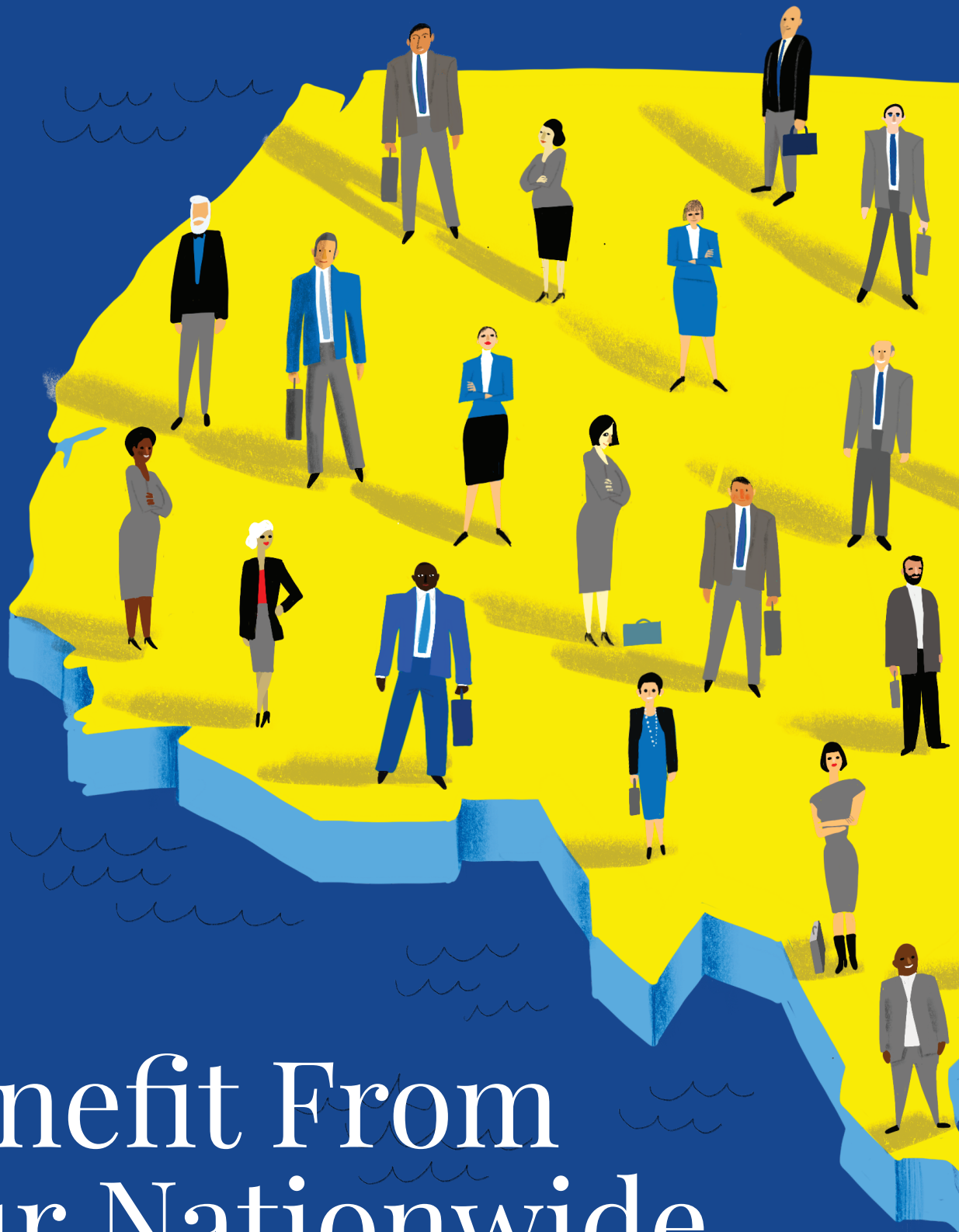
Association Fraud

# 2023 Notable Wins

Attorney	Case Name	Result	Verdict or Settlement	Case Type	Trial Location
Brian McClain, Ryan Rudd, Ravin Sahadeo	Hurley vs. John Mina	<b>\$20,800,000</b>	Verdict	Motorcycle	Florida
Timothy S. Moran, Eric "Rick" Block, Said Farhat, Paria Ghyabi	Carney, Toni vs. Green Built Construction & Development, Inc. and Bake	<b>\$9,050,000</b>	Verdict	Car Accident	Florida
Nick Russo	Private Settlement	<b>\$7,500,000</b>	Settlement	Car Accident	Confidential
A. Crosby Crane	Private Settlement	<b>\$6,260,000</b>	Settlement	Car Accident	Confidential
Eric "Rick" Block, Alicia M. Smith, Adrienn Nikolett Toth	Oliver, Alisha vs. Swarthout, Holly	<b>\$5,500,000</b>	Verdict	Car Accident	Florida
A. Crosby Crane	Burne vs. Adams Tank & Lift	<b>\$5,250,000</b>	Settlement	Car Accident	Confidential
Arthur Petrousian	Lugardo vs. County of Los Angeles, et al.	<b>\$4,750,000</b>	Settlement	Car Accident	California
Brian McClain, R. Ryan Sainz, Michael Biddle	Stacee Janish vs. Bonnie Shelton & Eric Shelton	<b>\$4,310,000</b>	Verdict	Car Accident	Florida
Sumeet Kaul, Darrell W. Kropog Jr., Demetri Zervos	Groszer, Lindsey vs. Southeast Power Corporation	<b>\$3,200,000</b>	Verdict	Car Accident	Florida
Nick Russo	Front Loader vs. Motorcycle	<b>\$3,000,000</b>	Settlement	Car Accident	Confidential
Ravin Sahadeo	Checo vs. Guerrero	<b>\$2,960,000</b>	Verdict	Personal Injury	Florida
Andres A. Hermida	Alexander, Chantelle vs. Antonio Perez, Ariecel Rojas & US Fire Systems	<b>\$2,810,000</b>	Verdict	Car Accident	Florida
Ryan Rudd, Ravin Sahadeo	Tenery, Daeri vs. Richardson, Rhea	<b>\$2,720,000</b>	Verdict	Car Accident	Florida
A. Crosby Crane, Jonathan Brozyna, Samuel B. Powers	Client vs. Republic Services of FL, Eric Amodie	<b>\$2,380,000</b>	Verdict	Car Accident	Florida
Keith R. Mitnik, A. Crosby Crane, Jonathan Brozyna, Samuel B. Powers	Miskiel, Deborah vs. Daniel Dukes & Innerflow Lawnsprinklers, Inc.	<b>\$2,320,000</b>	Verdict	Car Accident	Florida
Grant R. Gillenwater, Michael R. Vaughn	Coreen DeMayo vs. State Farm Mutual Automobile Insurance Company	<b>\$2,200,000</b>	Verdict	Car Accident	Florida
Miguel A. Dominguez	Paula Velez Yopez vs. Horizon Event Hall & LTP Associates	<b>\$1,750,000</b>	Settlement	Premises Liability	Georgia
Cody M. Allen	Private Settlement	<b>\$1,750,000</b>	Settlement	Premises Liability	Georgia



Attorney	Case Name	Result	Verdict or Settlement	Case Type	Trial Location
David G. Henry, Peter W. van den Boom	Private Settlement	<b>\$1,700,000</b>	Settlement	Car Accident	Confidential
Blake J. Lange	Romberg, Dawn vs. Grenier, Jeffrey & Clean Up Group Incorporated	<b>\$1,690,000</b>	Settlement	Car Accident	Florida
Ravin Sahadeo	Yravs vs. GEICO	<b>\$1,370,000</b>	Verdict	Personal Injury	Florida
Mike Bowling, J. Bernard Brannan III, Robert Arnwine	Clydean Foster vs. Auto-Owners	<b>\$1,250,000</b>	Verdict	Motorcycle Accident	Alabama
Samuel B. Powers	Private Settlement	<b>\$1,000,000</b>	Settlement	Personal Injury	Confidential
Craig R. Stevens, Jason Gelinias, Wesley M. Randolph	William Canada vs. Lehigh Regional Medical Center	<b>\$893,000</b>	Verdict	Medical Malpractice	Florida
Benjamin A. Webster, William B. Lewis, Katherine Thanos	Equestrian Living, LLC vs. White Birch Farm, Inc. & 13488 South Shore, LLC	<b>\$840,000</b>	Verdict	Commercial Lease & Real Estate	Florida
Alexander Hyder	Private Settlement – Dram Shop Case	<b>\$840,000</b>	Settlement	Personal Injury	Pennsylvania
Lauren E. Marley	Private Settlement	<b>\$800,000</b>	Settlement	Premises Liability	Confidential
Benjamin A. Webster, Katherine Thanos	AEGIS Business Strategies vs. Fowler, O'Quinn, Feeney, & Sneed P.A.	<b>\$738,000</b>	Verdict	Professional Malpractice	Florida
Jorge J. Garcia, Michael John Wood, Jennifer Rosinski	Garcia, Maribel vs. Walmart Inc.	<b>\$700,000</b>	Verdict	Premises Liability	Florida
Spencer Lawrence Payne	Estate of Judith Wilson vs. Palm Garden of Ocala	<b>\$500,000</b>	Verdict	Nursing Home Abuse	Florida
Lindsay Koppelman	Luis Figueroa vs SouthEast Personnel Leasing, Inc.	<b>\$320,000</b>	Settlement	Workers' Compensation	Florida
Michael Bird, Kristin Karbowski, Bora S. Kayan	Diane Wheeler vs. Detwiler's Farm Market, Inc.	<b>\$205,000</b>	Verdict	Premises Liability	Florida
Frederick J. Pye III, Mark Nation	Dina Loo & Lucio Lam vs. Homeowners Choice Property & Casualty Insurance Company, Inc.	<b>\$73,200</b>	Verdict	Home Insurance	Florida
Morgan Vasigh	Alicia Mejias vs. Citizens Property Insurance Corporation	<b>\$62,000</b>	Verdict	Cast Iron Pipes	Florida
Morgan Vasigh	Walsh, Samuel vs. Universal Property and Casualty Insurance Company	<b>\$56,900</b>	Verdict	Cast Iron Pipes	Florida
Frederick J. Pye III, Mark Nation	Maylin Rodriguez vs. Citizens Property Insurance Corporation	<b>\$32,000</b>	Verdict	Home Insurance	Florida



# Benefit From Our Nationwide Network



Although we don't cover every practice area in every state, we work closely with firms in all 50 states. We are happy to provide recommendations from our incredible list of attorneys for cases we do not handle. This is a powerful way to connect with lawyers from our huge network.

**To be connected with one of our recommended attorneys, submit your case through the Litify portal, and we'll reach out with a list tailored to your needs.**

# Litify — Submit Cases Digitally

Morgan & Morgan is proud to use Litify, an online litigation portal that shoves antiquated practices off the table, enabling firms to streamline how they do law. Through our company's digital Litify platform, called the Litify Referral Network, you'll get 100% transparency with the ability to track your case each step of the way. Furthermore, Litify ensures submitting your case is effortless and smooth, making it easier for you to begin — and continue — working with us.



## **OPEN AN ACCOUNT:**

Go to [referrals.litify.com/register](https://referrals.litify.com/register) to create a FREE Litify account.

The first time an account is created by a member of your firm, that person will need to digitally create the “firm” as well.

With any subsequent accounts created by your team, they will choose the “join” option to link new individuals to your firm.

## **SEND A CASE:**

Click on the “New Referral” button in the upper right-hand corner, and then fill in the required client and case information. Hit “Next.”

Type in “Morgan & Morgan P.A.” and select our firm, then click “Next.”

Review the case information and click “Send.”

You can see the status of your outbound cases by clicking the “Outbound Referral” box on the left side of the dashboard.



### **STEP 1 – DIAL (407) 792-6028 TO TRANSFER A CASE**

When you are speaking with your client, you can conference them in with our White Glove Service Team.

Your call will be answered within 2 minutes.

Our team will complete a consultation with your client to determine if this is a case we can help with.

If you are calling outside of business hours or your call is not answered within 2 minutes:

The client can request an automatic call back at a time convenient for them.

The client can leave a voicemail message, and our team will get back to them within 24 hours.

### **STEP 2 – SUBMIT THE CASE ON LITIFY**

After you've completed the Live Transfer, submit the case to Morgan & Morgan on Litify Referral Network (LRN) as you normally would.

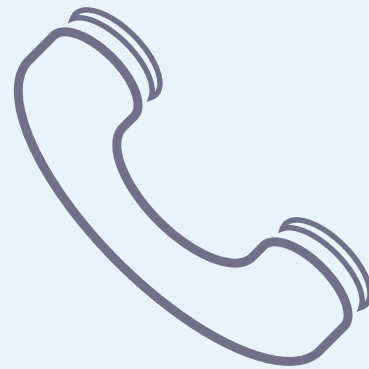
When we receive the case, our team will link your Live Transfer call to the case in the LRN.

This will ensure that you can track your case with full transparency throughout the entire journey of the case, from initial submission to final payment of referral or co-counsel fee in accordance with the case's state guidelines.

## **Live Transfer Phone System**

Our unique Live Transfer phone system is the secret weapon of our program. It allows you to live-transfer clients directly to Morgan & Morgan. Your case is initiated all in one call.

**Sending cases has never been easier.**



#### **HERE TO HELP**

[info@themorganconnection.com](mailto:info@themorganconnection.com)

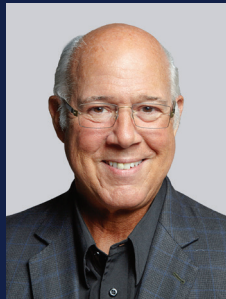
[www.themorganconnection.com/refer-clients](http://www.themorganconnection.com/refer-clients)

# The Morgan Connection Leadership

---



**DAN MORGAN**  
Managing Partner, Morgan & Morgan  
Founder, The Morgan Connection



**KEITH MITNIK**  
Senior Trial Attorney



**ISAAC SCHECTER**  
Director of Attorney Relationships



**KEVIN MCCARRON**  
Director of Strategic Partnerships



**KYLE MCNULTY**  
Director of Business Development



**ANTHONY ROSSI**  
Director of Private Client Consultants



# More Than Just Fees

The Morgan Connection is founded on the belief that we can go further together than we can alone. That is why we created a program packed with opportunities to connect, learn and grow together.



## Virtual lunch hours

with conversations on hottest topics led by the biggest names in the industry.



## Newsletters

chock-full of useful information.



## The Art of Outsmarting LIVE

Trial Skills Summit with Keith Mitnik

For more information visit: [www.theartofoutsmarting.com](http://www.theartofoutsmarting.com)



An illustration on a dark blue background. At the top left, a large, realistic hand in a grey suit sleeve reaches down. From its palm, a large, golden hand in a white shirt cuff reaches down, holding a dark, curved path. Along this path, several stylized business people in various colored suits (yellow, blue, grey, black) are running away from the viewer. One man in the foreground carries a grey briefcase. The overall theme is guidance and professional success.

**MORGAN & MORGAN**

THE MORGAN CONNECTION

## Lessons from Legends

---

ARTICLES, VIDEOS AND PODCASTS  
ON HOW TO BUILD WINNING  
CASES AND GROW YOUR FIRM  
FROM MORGAN & MORGAN'S TOP  
ATTORNEYS AND OPERATORS.

[themorganconnection.com/undisputed](http://themorganconnection.com/undisputed)